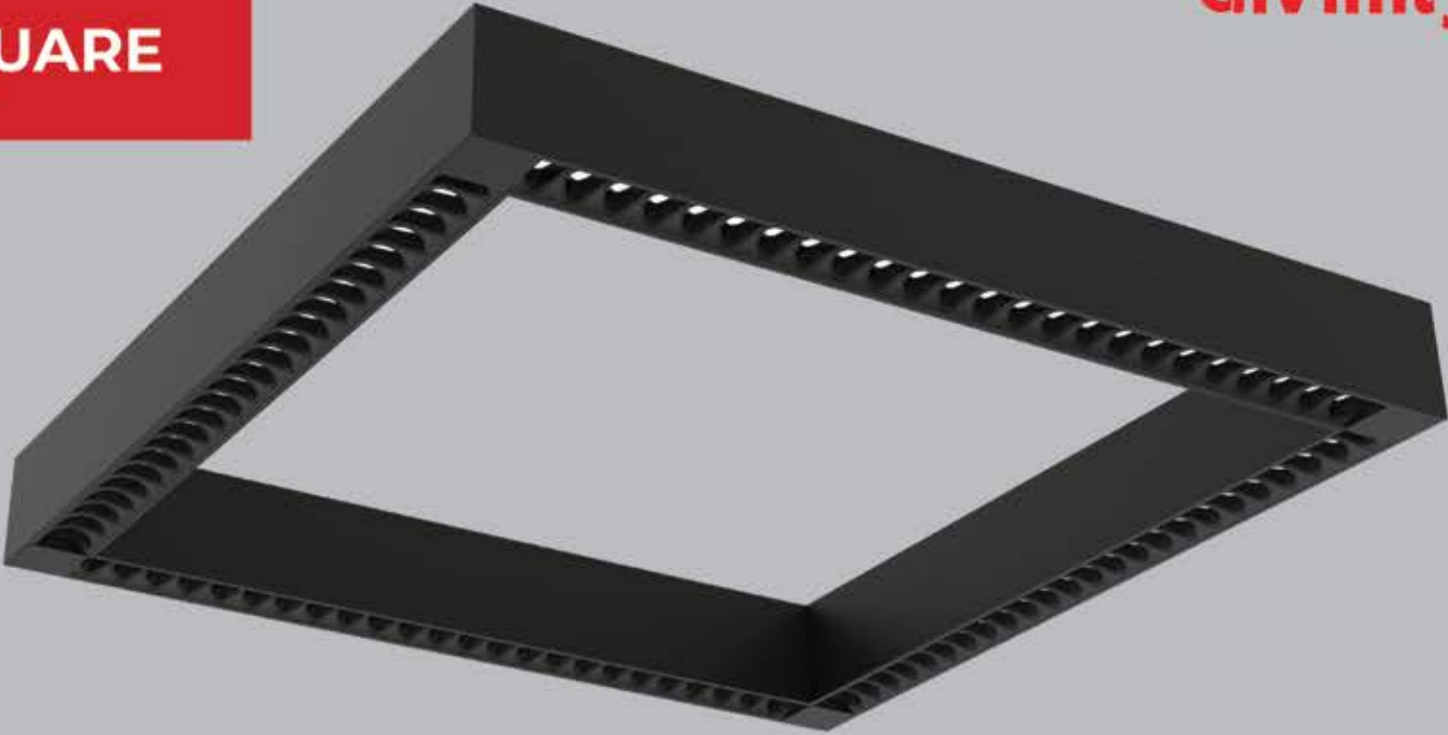


XTO SQUARE





XTO SQUARE

XTO Square has :

- Luminaire housing of extruded aluminium
- Range of sizes and angle designs
- Application requirements in different fields
- Surface powder coated
- LED PCB mounted on insert design with heat sink
- Bottom opening for easy maintenance
- Pendant with cable suspension
- M6 bolt for M6 fastener
- Modular design with uniform illumination
- UGR less than 9
- Microstructure anti-glare optical lens
- Energy-efficient LED with color rendering

Quick Info

CRI ≥ 90

3000K/ 4000K/ 5700K

Tunable white (2700K-6500K)

ON-OFF/ON-OFF (FLICKER FREE)

DALI-2 DT6 / DALI-2 DT8/ DALI+

SDCM<3

Lens

L70 @50,000h

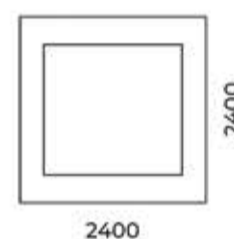
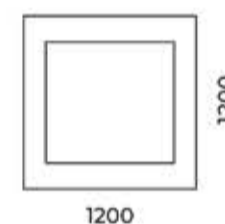
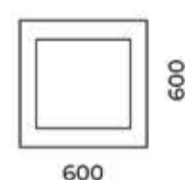
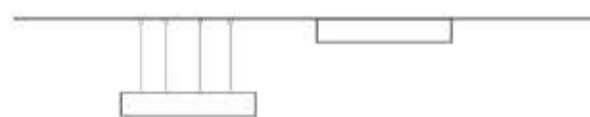
Aluminium

Types

Pendant/ Surface

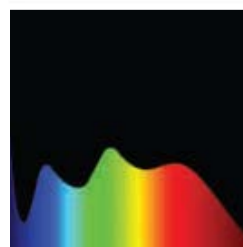
Single Line Diagram

Pendant/ Surface



Light Distribution

Direct Direct-Indirect



CRI ≥ 90



TUNABLE
WHITE

XTO SQUARE



XTO SQUARE (DIRECT)

System Power	Dimensions
35W	LXW= 600mmX600mm
70W	LXW= 1200mmX1200mm
105W	LXW= 2400mmX2400mm

XTO SQUARE (DIRECT-INDIRECT)

System Power	Dimensions
35W	LXW= 600mmX600mm
70W	LXW= 1200mmX1200mm
105W	LXW= 2400mmX2400mm

Order Options

Distribution

- Direct
- Indirect
- Up-50% / Down-50%
- Up-30% / Down-70%
- Up-70% / Down-30%
- Up-20% / Down-80%
- Up-80% / Down-20%

CCT (Color Temperature)

- 3000K
- 4000K
- 5700K
- Tunable 2700K-6500K



CRI

>90

Beam Angle

- 80°
- 100°

Control

- ON-OFF
- ON-OFF (FLICKER FREE)
- DALI-2 DT6
- DALI-2 DT8
- DALI +



Mounting Type

- Pendent
- Surface

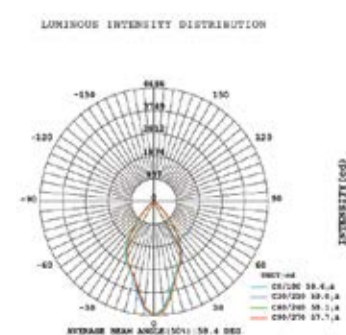
Material Color

RAL As Per Request

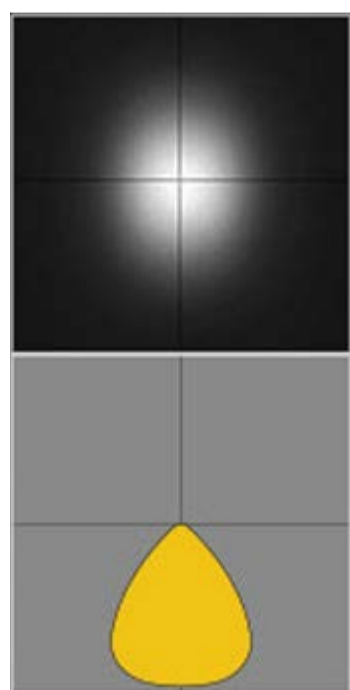
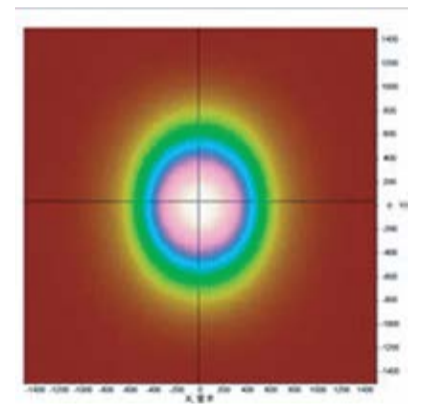
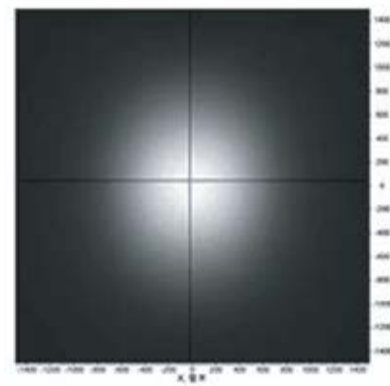
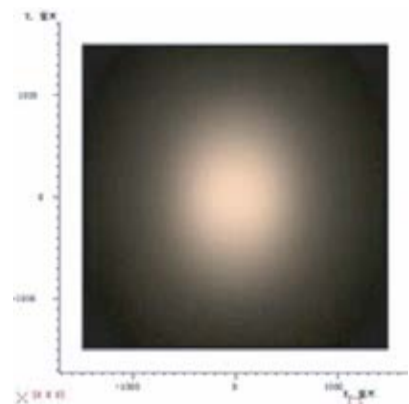
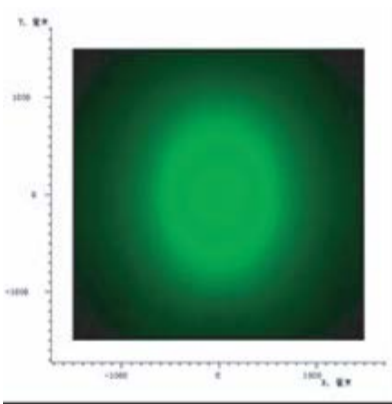
XTO Reflector Option

- XTO 20 (20mm Lens)
- XTO 25 (25mm Lens)
- XTO 30 (30mm Lens)
- XTO 35 (35mm Lens)
- XTO 40 (40mm Lens)
- XTO 45 (45mm Lens)

Photometric Details



PHOTOMETRIC DETAILS



~80° wide beam (FWTM)



~100° wide beam (FWTM)